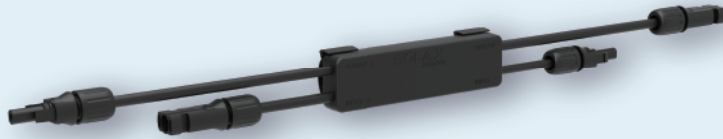


Rapid Shutdown Device



XRSD-1C

Prioritizing safety and rapid shutdown capabilities, the XRSD series offers a sophisticated module-level solution that guarantees the smooth functioning of both new and existing PV systems. Once activated by the SolaX Transmitter—XRSD-Core Kit, the XRSD modules ensure your connected PV system remains operational.

In case of emergencies, you have multiple shutdown options: either remotely control each individual panel through the SolaX cloud, toggle the AC breaker on the Transmitter, or engage the E-STOP button. This versatility makes the XRSD system a reliable safety measure for quick deactivation of your PV system as needed.

Note: To achieve rapid shutdown, please use with the TRANSMITTER KIT (Model: XRSD-CORE KIT).



High Efficiency

- Max. 20A PV input current
- Lower power consumption & wider operating voltage



Assured Safety

- Module-level rapid shutdown
- IP68 with unrivaled reliability



Intelligent Design

- Faster installation with plug-and-play cables and connectors
- Ultra-low signal noise, enhancing system stability



Flexible Adaptability

- Compatible with all SolaX inverters and other major inverter brands*
- Compatible with mainstream PV panels

**Compatibility testing required*

XRSD-1C

ELECTRICAL DATA	
Input voltage range	8 ~ 80 V
Output voltage range	8 ~ 80 V
Max. PV input current	20 A
Max. short circuit current	26 A
Recommended fuse rating	30 A
Maximum system voltage	1500 V
MECHANICAL	
Dimensions (without cables and connectors)	130 × 36 × 21 mm
Weight	400 g
Input connectors	MC4 (Standard)
Input cable length	0.2 m
Output connectors	MC4 (Standard)
Output cable length	1.2 m
Communication type	PLC
ENVIRONMENT LIMIT	
Protection class	IP68 / NEMA6P
Operating temperature range	-40 ~ 85°C
COMPLIANCE	
Safety	EN 62109-1:2010
EMC	EN IEC 61000-6-1 / 2 / 3 / 4; EN IEC 61000-3-2 / 3 / 11 / 12; EN 55011